



1, 2 & 3 BEDROOM LUXURY APARTMENT HOMES

FEATURES & AMENITIES

COMMUNITY AMENITIES

Resort-Style Swimming Pool | **Controlled Access Entry** | Attached Garages* |
Executive Business Center | Media Room | **Cardio Theatre Fitness Center** |
Courtyards w/Picnic Areas | **Planned Resident Activities** | Door-to-Door Trash
Valet | **24-Hour Emergency Maintenance**

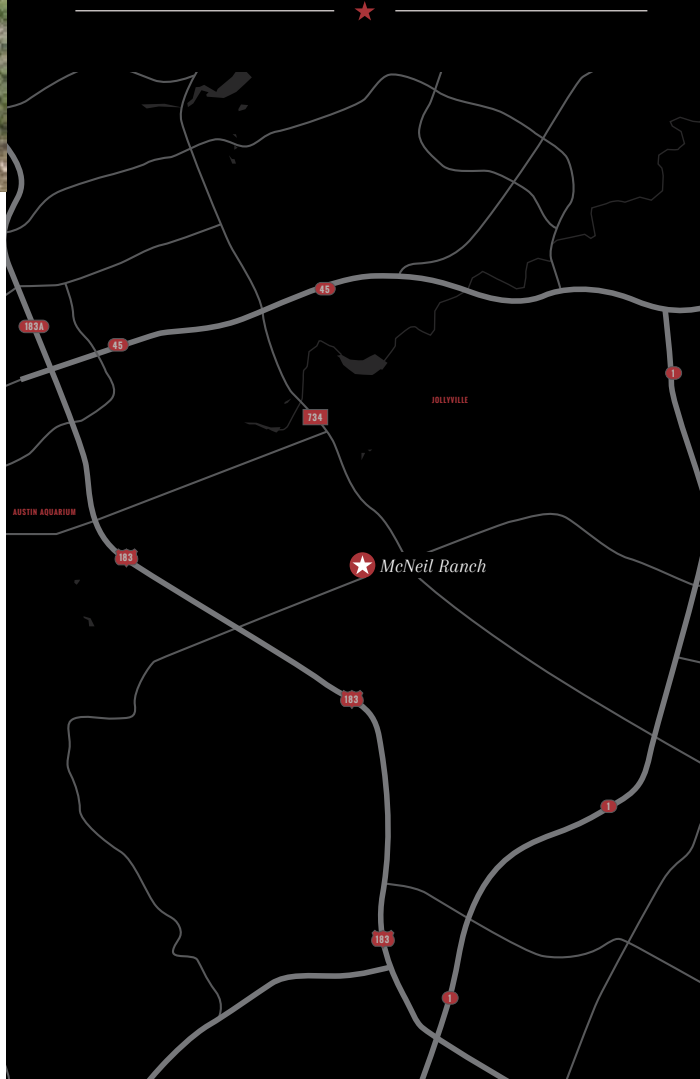
APARTMENT FEATURES

Individual Alarm System | **Ceramic Tile Entry** | Nine-foot Ceilings w/Crown
Moulding | **Vaulted Ceilings*** | Built-in Computer Niche* | **Fireplace*** | Spacious
Closets | **Double Vanities*** | Prewired for Surround Sound

* In Select Homes



CLOSE TO IT ALL



MCNEIL RANCH

A PREFERRED APARTMENT | **COMMUNITY**SM
★ ★ ★ ★ ★



512.331.6100

6280 McNeil Drive | Austin, TX 78729

McNeilRanchApts.com

LIVE, WORK, RELAX



Convenience and luxury are only a few of the characteristics that encompass your life at McNeil Ranch Apartment Homes. A rare combination of resort style amenities, classic architecture, and a superior location make for an excellent living experience. Conveniently located in Austin, TX, you are just minutes from fine dining and shopping. If outdoor recreation is your game, McNeil Ranch also offers close proximity to some of the most prestigious golf courses, parks and resort amenities you can imagine. Come discover McNeil Ranch...designed with your convenience in mind!

Experience the difference... Experience Preferred Apartment Communities!



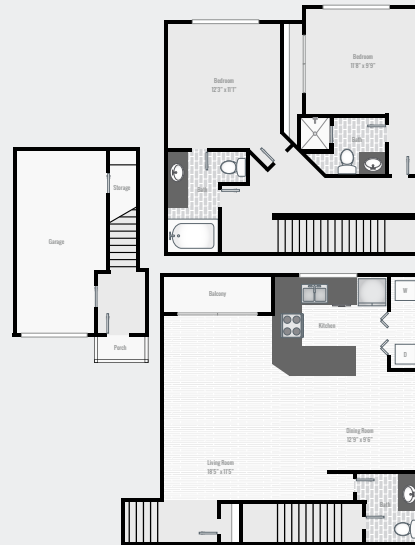
BARTON 1 BR | 1.5 BA | 807 SF | 309 SF Garage



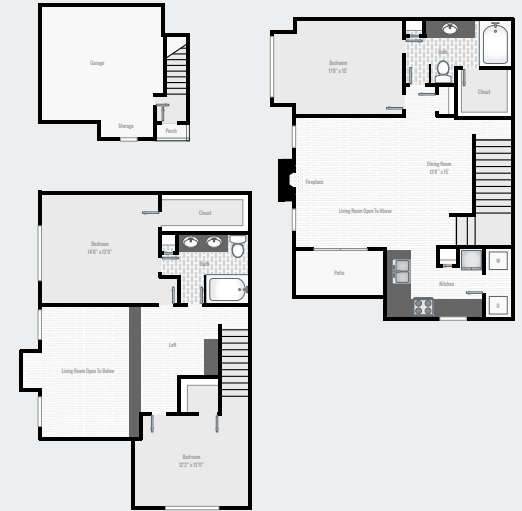
MONTEREY 2 BR | 2.5 BA | 1,267 SF | 290 SF Garage



BLAKE 1 BR | 1 BA | 677 SF | 270 SF Garage



MARTIN 2 BR | 2.5 BA | 1,154 SF | 342 SF Garage



ROBIN 3 BR | 2 BA | 1,468 SF | 243 SF Garage